

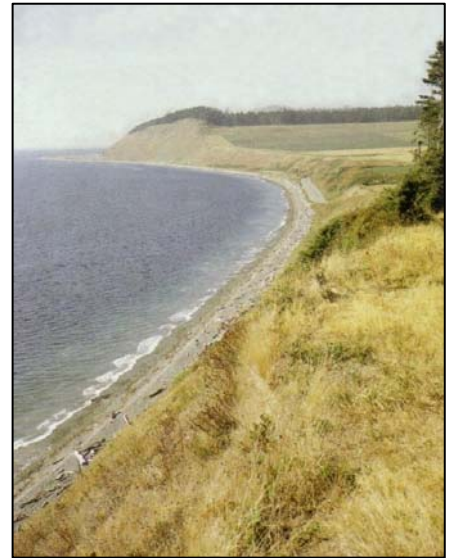
NW OCTA FALL MEETING

Coupeville, Whidbey Island, WA

September 7–9, 2007

Coupeville, Washington—one of the oldest towns in Washington—is in Ebey's Landing National Historical Reserve, a unit of the National Park Service. Also included in the reserve are two state parks—Fort Casey and Fort Ebey—and the Central Whidbey Island Historic District, which is on the National Register of Historic Places. Ebey's Landing provides a vivid historical record of Pacific Northwest history, including the first exploration of Puget Sound by Captain George Vancouver in 1792, early settlement by the Ebey and other early families, growth and settlement resulting from the Oregon Trail and the westward migration, and the Donation Land Claims (1850–1855).

Colonel Isaac Neff Ebey was among the first permanent settlers on the island. Isaac and his friend Samuel Crockett came west from Missouri in search of land, and both men had filed donation claims on Central Whidbey Island by spring 1851. After Ebey wrote home urging his family to join him, his parents and other family members emigrated to the island in 1854. The simple home of Isaac's father Jacob, and a blockhouse he erected to defend his claim against Indians, still stand today overlooking the prairie named for the family. Isaac became prominent in public affairs, but he was tragically killed in 1857 by northern coastal



Indians seeking revenge for the killing of one of their own chiefs.

Isaac's brother Winfield Scott Ebey kept a superb diary during the family's overland journey, which OCTA has published. While the Ebey family's story is integral to the island's history, it is just one of the many fascinating aspects of Ebey's Landing.

For more information, see

www.nps.gov/ebla

www.centralwhidbeychamber.com

www.coupevillelodging.com



The Jacob Ebey house, built 1855, and Ebey blockhouse, 1856.

This exciting weekend event includes an always-popular raffle and a silent auction at the group dinner on Friday. A symposium on local history and Oregon Trail connections will be held on Saturday, followed by a guided bus tour of Ebey's Landing National Historical Reserve. On Sunday the group will have a continental breakfast and museum tour at the Island County Historical Museum.

Don't Forget to Bring Raffle Items!

Schedule of Events

Friday, September 7

3:00–5:00 pm: PICK UP REGISTRATION PACKETS – Island County Historical Society Museum
5:00–9:00 pm: group dinner, entertainment, raffle, and silent auction – Recreation Hall

Saturday, September 8

8:00 am–1:45 pm: Symposium – Recreation Hall

“Welcome Address,” Richard L. Castellano, Island County Historical Society

“Ebey's Landing National Historic Reserve,” Mark Preiss, Reserve Manager

“Ebey Family's Overland Journey to Whidbey Island in 1854,” Susan Badger Doyle

“Terry Family History: Oregon Trail pioneers and Early Settlers on Whidbey Island,” Joanne Engle Brown

“Isaac N. Ebey: Northwest Pioneer,” Murray L. Carroll

Lunch

“The Creation of Ebey's Landing Reserve: Why and How,” Reed Jarvis

2:30–5:00 pm: Bus tour of Ebey's Landing Reserve and Sunnyside Cemetery

Evening: dinner on your own

Sunday, September 9

8:30–10:00 am: Continental breakfast – Island County Historical Society Museum

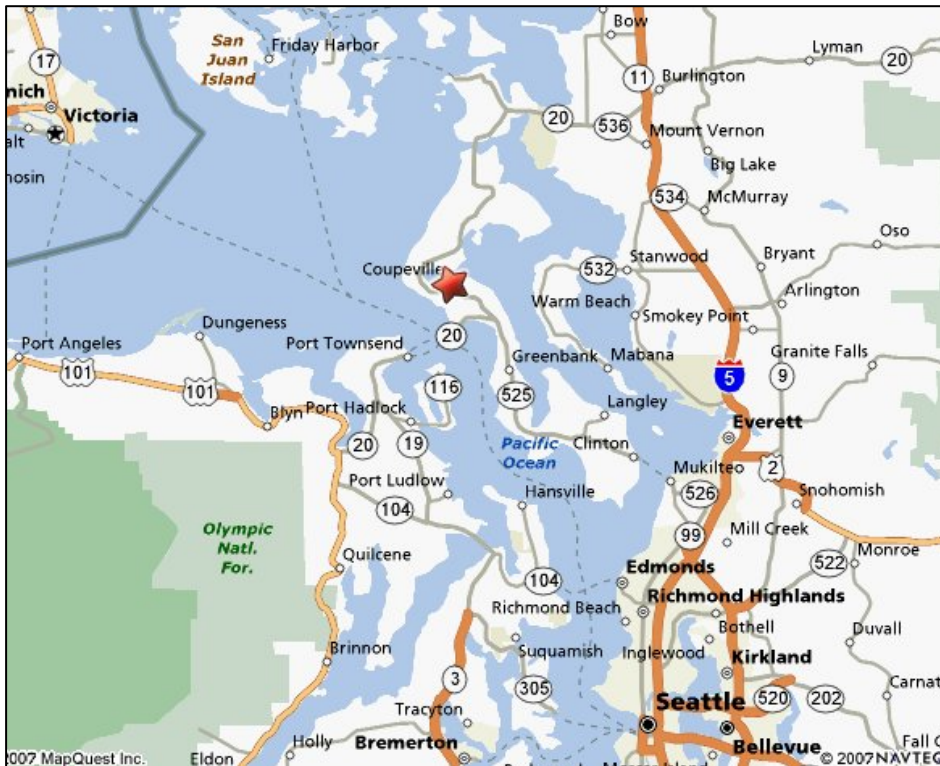
9:30 am–1:30 pm: Museum tour

Coupeville Event Locations

Island County Historical Society Museum: 908 NW Alexander Street

Recreation Hall: Corner of Coveland and Alexander Streets

Directions to Coupeville



Driving from Seattle: Take I-5 north to Burlington; turn west, onto SR-20 towards Anacortes. Proceed south on SR-20, crossing Deception Pass Bridge, through Oak Harbor, to Coupeville.

Ferry from Seattle: Take I-5 north; turn onto SR 525 at exit 182 and proceed to the Mukilteo ferry terminal. The ferry sailing takes about 1/2 hour. Once on Whidbey Island, proceed north on SR 525 about 28 miles to Coupeville.

Ferry schedule information:
www.wsdot.wa.gov/ferries
Washington 888-808-7977
Out of State 206-464-6400

NW OCTA Fall Meeting, Whidbey Island, September 7-9, 2007
REGISTRATION FORM

NAME(S): _____

ADDRESS: _____

Email or phone (in case we need to reach you quickly): _____

Registration: \$40.00 per person Number attending: _____ Total: \$ _____

Friday Dinner: \$25.00 per person (entrée plus salad, bread, cobbler, coffee)

 Entrée: Cioppino (Northwest fish stew) #Meals _____ Total: \$ _____

 Entrée: Cheese Lasagne (a seafood alternative) #Meals _____ Total: \$ _____

Saturday Continental Breakfast (Muffins and coffee)

 Included in registration; indicate number attending # _____

Saturday Lunch: \$10.00 per person

 Fresh wrap sandwiches, chips, cookies, & water #Meals _____ Total: \$ _____

Saturday Bus Tour:

 Included in registration; indicate number attending # _____

Saturday Dinner: ON YOUR OWN at one of the area's fine restaurants

Sunday Continental Breakfast: (Provided by Island County Museum, \$6.00 at the door)

 NOT included in registration; indicate number attending # _____

GRAND TOTAL \$ _____

Please respond as soon as possible. The NW OCTA Chapter Treasurer should receive this registration form **no later than August 31, 2007**. You will receive a letter or email confirming your reservations. For more information, contact Joyce Bolerjack, 425-454-7118, jbolerjack@comcast.net.

Mail to:

Joyce Bolerjack
10813 NE 20th Street
Bellevue, WA 98004-2907